



PROFITEST **MASTER**
INSTALLATION TESTER

New Premium Test Instruments



The new PROFITEST Master provides professional electricians with a state-of-the-art, universal measuring tool. It's capable of executing all tests for the effectiveness of protective measures in electrical systems, as required by VDE 0100, part 600, and specified in the individual sections of VDE 0413. It's thus ideally suited for approval tests and periodic testing of permanently installed electrical equipment. Measuring category CAT IV provides the user with the highest possible safety standard.

Whether it's used in private, commercial or industrial objects – the PROFITEST Master provides the user with the assurance that his installation is in compliance with the applicable regulations, and that it functions reliably. Test results can of course be transferred to a PC, and documented as substantiation of correct installation.



In actual practice, the PROFITEST Master is distinguished by exceptional ease of use and a broad range of tests: Its advanced technical concept is consistently oriented towards daily tasks in the field of electrical engineering. In addition to basic standard tests, the instrument offers numerous additional measuring functions for subjecting installations to the acid test – and for assuring highly precise results.

Features

- CAT IV
- DKD calibration certificate
- Bidirectional data exchange per USB
- AMK - Automatic measurement cable compensation using 4-wire measuring method
- All measurements per VDE 0100 part 600 / IEC 60364.6.61 / EN 61557 and additionally:
 - Voltage drop measurement
 - Insulation measurement with rising voltage
 - Current measurement with Metraflex
 - Loop resistance measurement without RCD tripping
 - RCCB test with continuously rising ramp
 - RCD Testing TYPE B
- 1 mA varistor response test with insulation measuring voltage up to 1,000 V
- 2-pole measurements with plug insert or convertible 2/3-pole adapter
- Connection of RFID or barcode scanner

- Including ETC software (Electrical Testing Center)

CAT IV

DKD



AMK

A special advantage of the PROFITEST Master is its intelligent, ergonomic design. Operation is easy and safe, and data can be conveniently read from the large illuminated display. A comprehensive accessories package offers the right connection options for every conceivable task.

The PROFITEST Master sets new standards with regard to time savings, safety and operating convenience: the combination of its innovative design and ergonomic operating concept makes it the ideal companion for every electrician.



product
design
award

2009

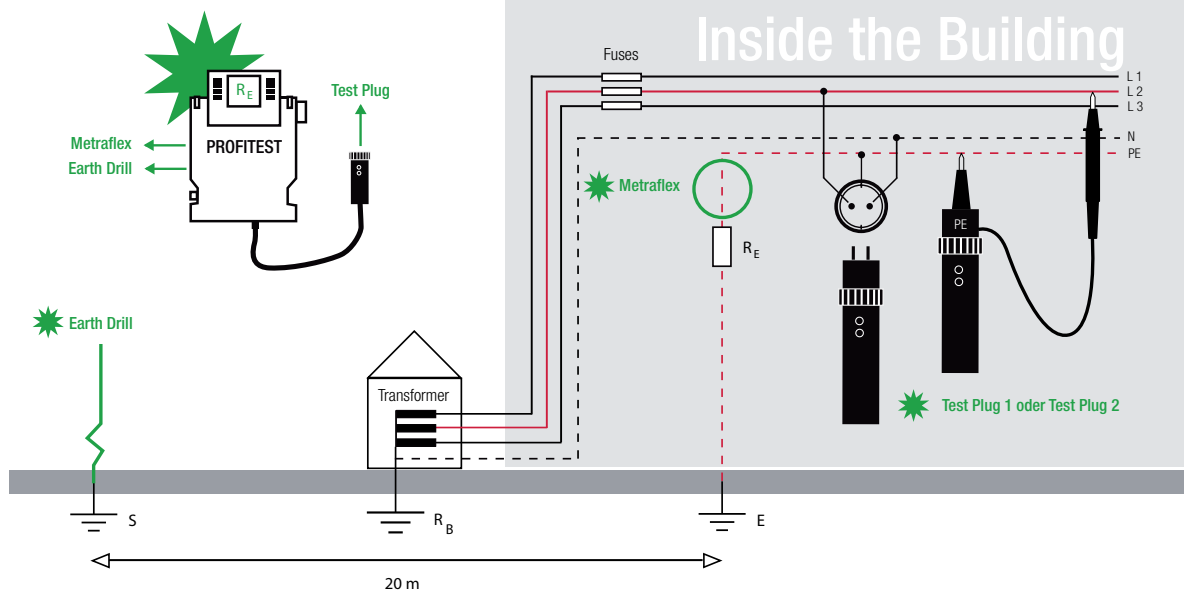


Professional Earthing Measurement - Fast and Precise

As a genuinely multi-talented instrument, the PROFITEST Master allows for the reliable determination of earth resistances - in a particularly straightforward and efficient manner: measurements can be performed with the flexible current sensor METRAFLEX without the need to interrupt the earth electrode.

Metraflex

Selective Earth Resistance Measurement with Metraflex





Test Plug

Earth Drill

Starterpaket BASE

- Profitest M-BASE
- Metraflex
- PRO-RLO adapter
- Earth drill
- Drum
- Variable plug adapter set
- Battery set and charger
- Master case
- Carrying pouch

PRO-Package E

- Profitest M-BASE
- Metraflex
- PRO-RLO adapter
- Earth drill
- Drum
- Variable plug adapter set
- Battery set and charger
- Master case
- Carrying pouch

Starterpaket TECH

- Profitest M-TECH
- Metraflex
- PRO-RLO adapter
- Earth drill
- Drum
- Variable plug adapter set
- Battery set and charger
- Master case
- Carrying pouch

Earth Resistance Measurement



Metraflex

The flexible current sensor can be applied to various types of conductors, e.g. insulated cables, busbars and tubes.

PRO-RLO Adapter

The measuring adapter makes it possible to perform measurements at permanent connections, in distributors and at 3-phase current outlets.

Earth Drill & Drum

The 35 cm earth drill is used as a probe or auxiliary earth electrode for earthing measurements and RCCB testing. The drum accommodates a 50 m cable for distance measurements.

Variable Plug Set

One of the country-specific safety attachments or the measuring adapter for universal connection can be plugged onto the test plug.

Meisterpaket TECH

- Profitest M-TECH
- Metraflex
- PRO-RLO adapter
- Earth drill
- Drum
- Variable plug adapter set
- Battery set and charger
- Master case
- Carrying pouch

Xtra-Package E

- Profitest M-TECH
- Metraflex
- PRO-RLO adapter
- Earth drill
- Drum
- Variable plug adapter set
- Battery set and charger
- Master case
- Carrying pouch

Xtra-Package XL

- Profitest M-TECH
- Metraflex
- PRO-RLO adapter
- Earth drill
- Drum
- Variable plug adapter set
- Battery set and charger
- Master case
- Carrying pouch



Battery Set + Charger

The mains power battery charger for PROFITEST Master is supplied including 8 NiMH-batteries.

Master Case

The stackable system case offers additional space for a 3-phase adapter, reel with measurement cable, telescoping rod, earth drill and probe.

Carrying Pouch

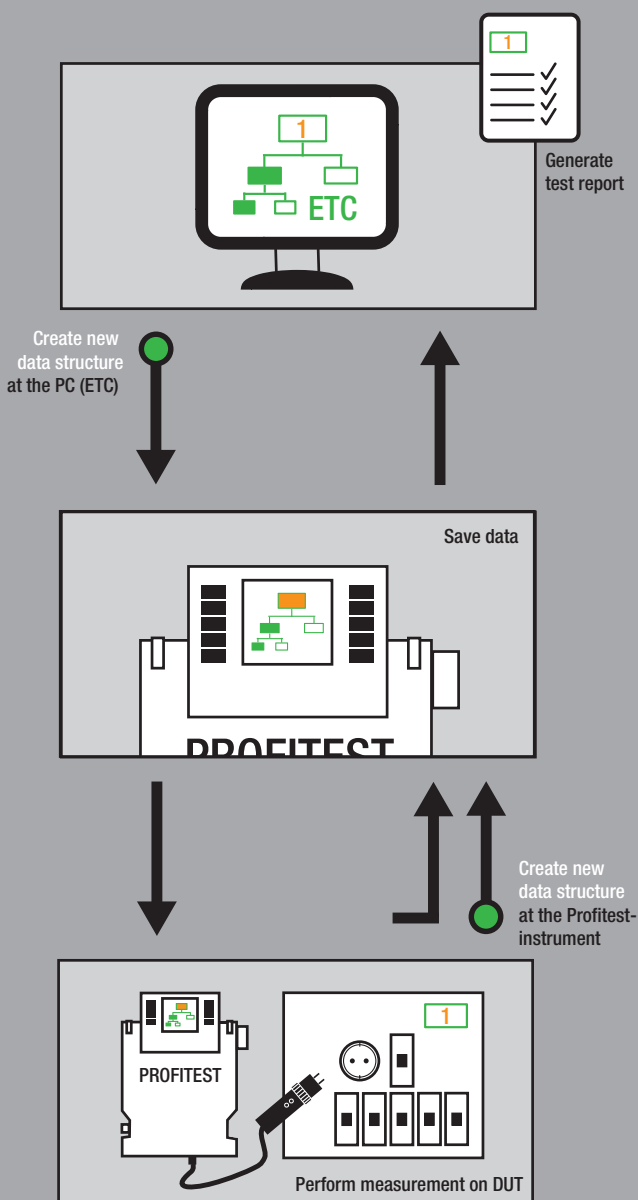
The PROFITEST M can be conveniently transported in the F2000 carrying pouch along with plug inserts, measuring adapter and replacement batteries.

RFID Scanner

The RFID scanner allows for the contactless logging of DUTs. It is also available as optional accessory equipment.

Professional Software for Efficient Testing

The high performance features of the PROFITEST Master test instrument can be fully exploited with ETC professional user software (Electric Testing Center). It's been specially developed to increase measuring efficiency and convenience for the user.

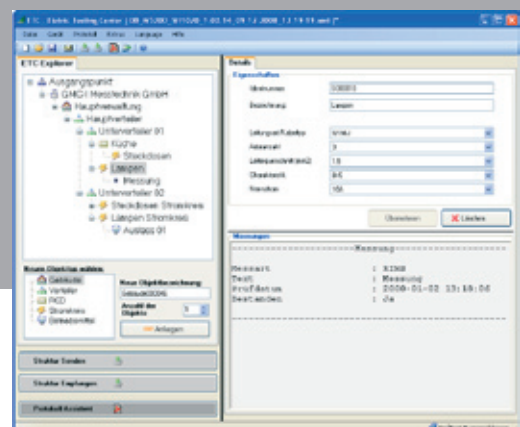


ETC provides a great variety of supplementary options for data acquisition and management, as well as for controlling test sequences.

- The software acquires all important data for generating reports per DIN VDE 0100, part 600.
- Test reports (ZVEH) can be generated automatically.
- Distributor structures with circuit/RCD data can be defined individually.
- Created structures can be saved to memory and retrieved as required.
- The PROFITEST M and the PC can exchange data bidirectionally via USB connection.
- Data can be exported to Excel, CSV and XML.

PC and Test Instrument: Dialogue for Reliable Data

ETC supports seamless communication between the PROFITEST Master and the PC. Bidirectional data exchange via USB provides the user with direct access to quick measurements. The PROFITEST M is capable of processing individualized test structures which have been previously created with ETC at a PC. They're displayed at the test instrument 1:1 after transfer. Each structure can be made up of any desired combination of objects: Number and type of customers, buildings, distributors, electrical circuits and RCDs can be freely selected. After measurement has been performed, the results can be transferred back to the PC. A test report can be generated automatically with this data.



Outstanding Contacts

Thanks to its diverse connection options and selectable language combinations, the PROFITEST Master is perfect for universal use in domestic and foreign applications.

Language Skills

The languages used at the display and for navigation are variable, and the instrument can thus be used by local employees in foreign countries as well.

For Use All Over the World

With its five interchangeable plug inserts, the PROFITEST can be connected to outlets in all European nations, and most other countries as well. The 2/3-pole adapter included as standard equipment provides additional adaptation options. Tests in accordance with the following international standards are of course possible with the instrument:

IEC 60 364-6

CEI 64-8

E 8001-6-61

NIV/NIN

CSN 33 2000

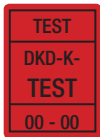
NEN1010-6 Hoofdstuk 61



Functions at a Glance

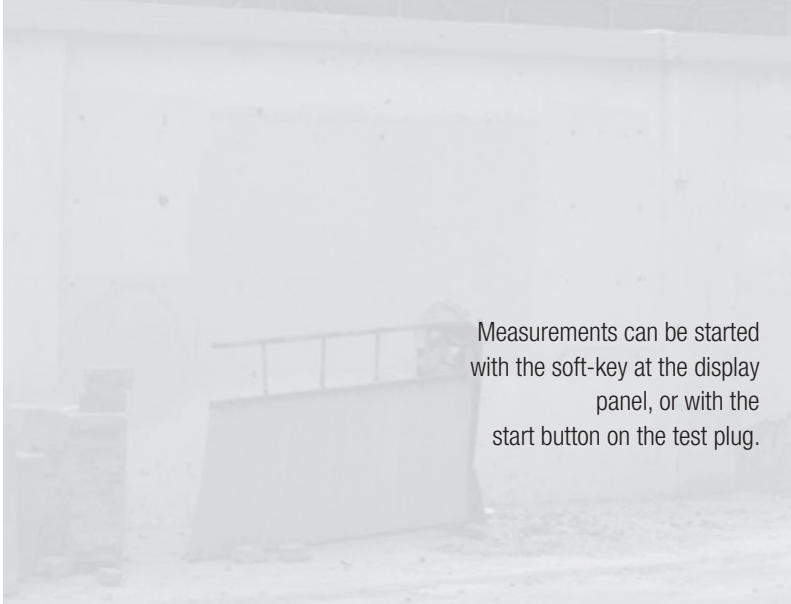


Mbase	MTECH	Technical Functions
Z_{L-PE} / Z_{L-N} measurement		
■	■	Z _{L-N} with voltage drop measurement (max. 4%)
■	■	Fuse table
	■	Loop measurement without tripping the RCD (with bias magnetization)
RCD testing		
■	■	Nominal current (10, 30, 100, 300, 500) type A
	■	Nominal current (10, 30, 100, 300, 500) type B
■	■	U _b measurement without tripping the RCD
■	■	Time-to-trip measurement
■	■	Tripping current measurement (ramp)
	■	DC RCD testing (type B)
R_{L0} measurement		
■	■	Automatic polarity reversal
■	■	Adjustable limit values
R_{ISO} measurement		
■	■	Predefined test voltages (10, 100, 250, 500, 1000 V)
■	■	Variable test voltage
■	■	Rising test voltage with disruptive discharge recognition
■	■	Adjustable limit values
R_E measurement		
■	■	I/U measuring method, mains operated with probe
■	■	I/U measuring method, mains operated without probe
■	■	Selective earth measurement (probe, auxiliary earth electrode, current transformer clamp)
Special measurements		
■	■	Leakage current (clamp)
■	■	Meter start-up
■	■	Phase sequence indicator
■	■	RCD test in IT systems
■	■	Standing-surface insulation (Z _{ST})
■	■	Ground leakage resistance (R _{E(ISO)})





Convenient RCD testing and loop resistance measurement is assured by the 2-pole adapter. It's not necessary to contact all three poles (L, N and PE).



Measurements can be started with the soft-key at the display panel, or with the start button on the test plug.





GOSSEN METRAWATT

GMC-I Messtechnik GmbH

Südwestpark 15 ■ 90449 Nürnberg ■ Germany

Phone: +49 911 8602-111 ■ Fax: +49 911 8602-777

www.gossenmetrawatt.com ■ info@gossenmetrawatt.com